



CRAIGHURST CROSSING



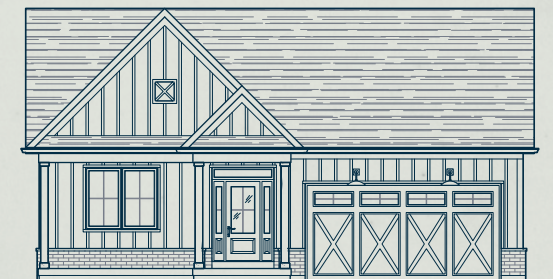
THE MORRISON.

Bungalow

Elevational A, 1,671 sq ft

Elevational B, 1,662 sq ft

*Once known as **Morrison's Corners**, the Village of Craighurst underwent a transformation, adopting its current name in 1858 to mirror the community's growth and evolving identity.*

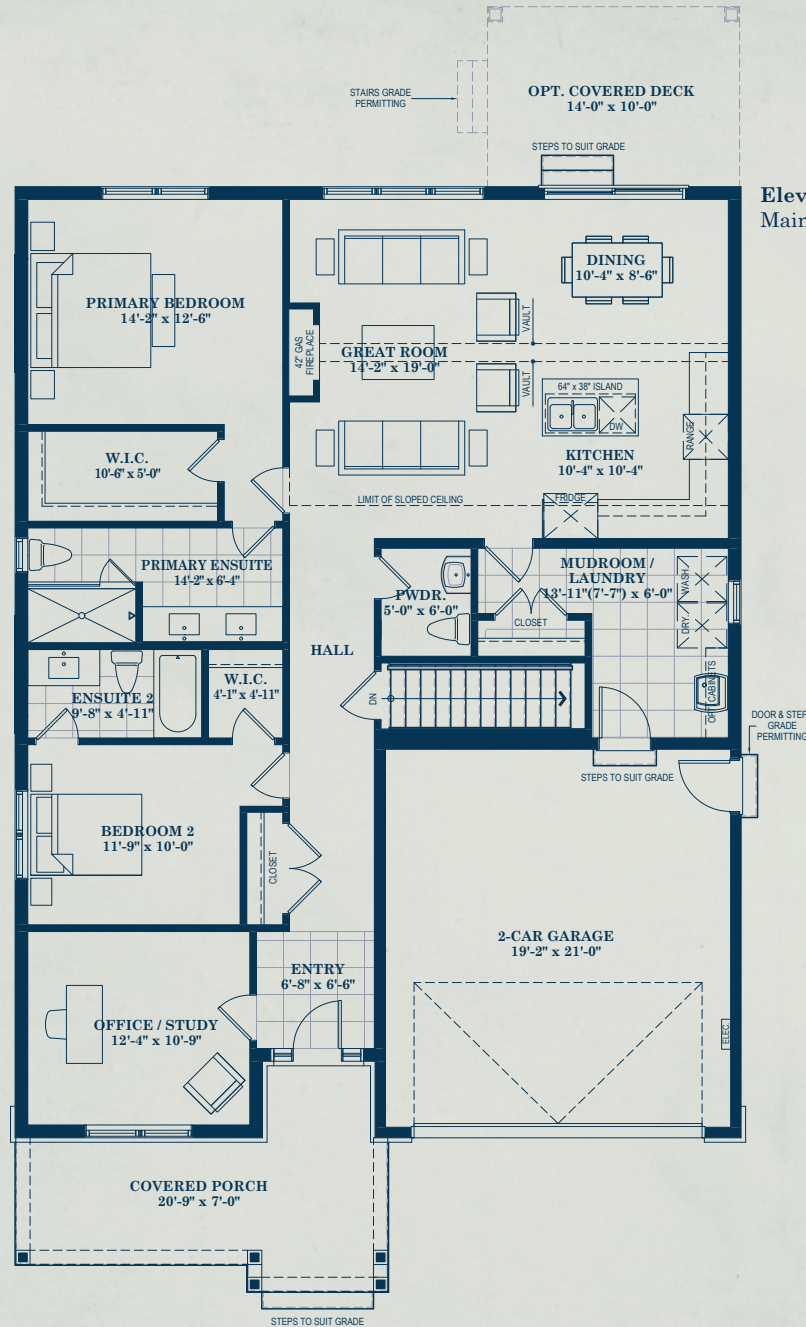


Elevation A

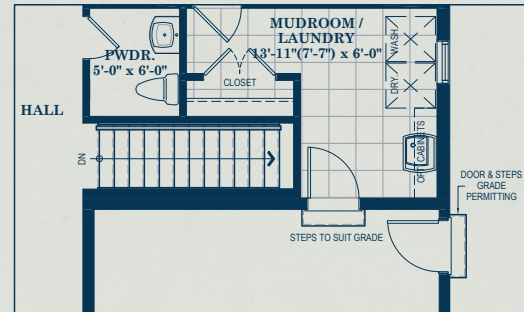
Elevation B

Plans and specifications subject to change without notice. All renderings are artist's concept. E.&O.E.

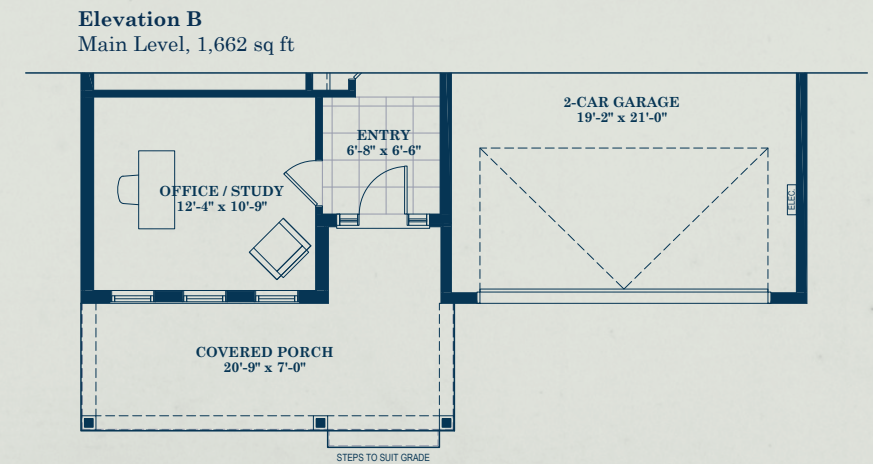
THE MORRISON.



Elevation A
Main Level, 1,671 sq ft

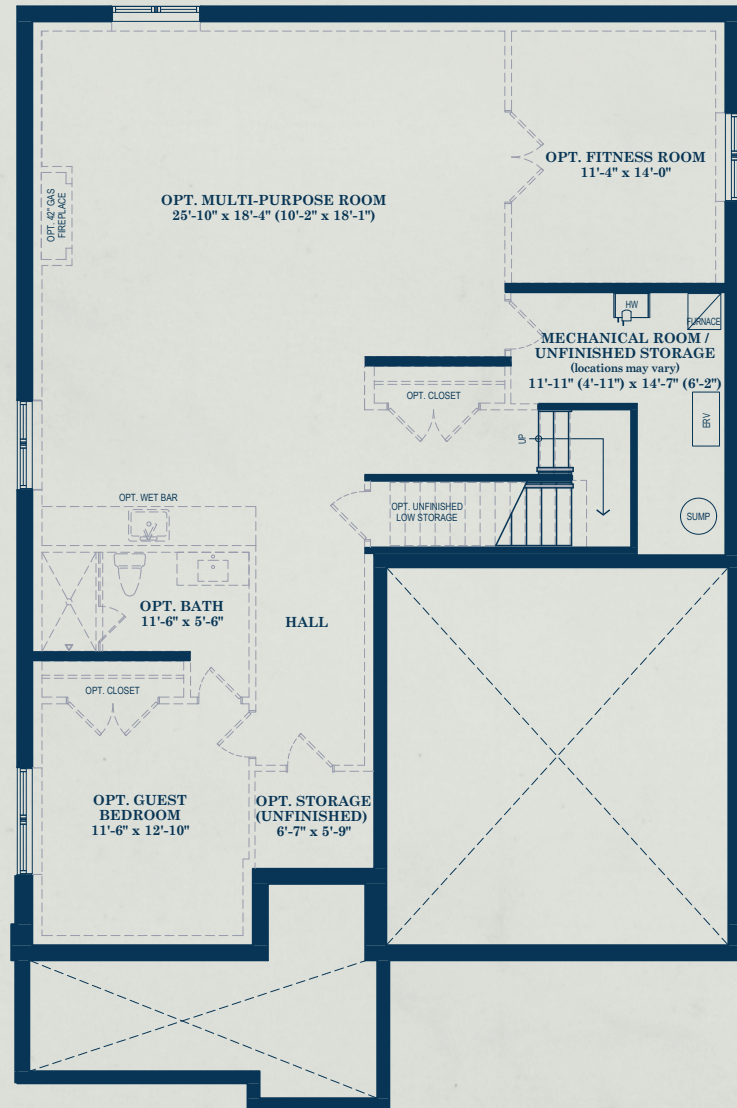


With finished lower level
option elev. A & B

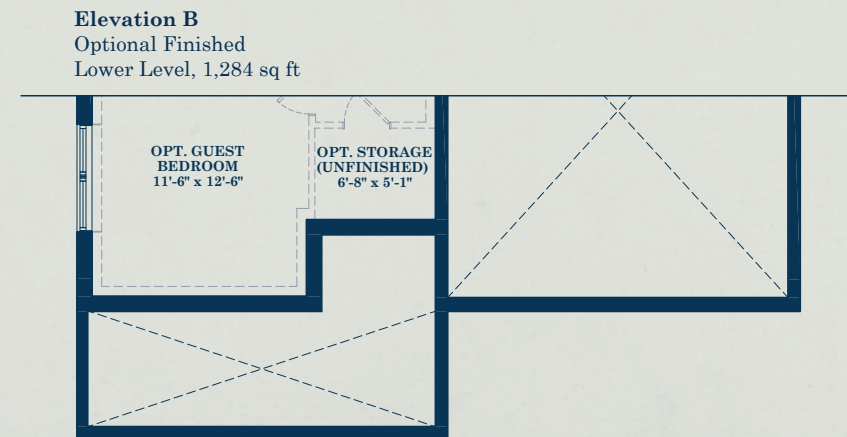


Elevation B
Main Level, 1,662 sq ft

THE MORRISON.



Elevation A
Optional Finished
Lower Level, 1,290 sq ft



Elevation B
Optional Finished
Lower Level, 1,284 sq ft